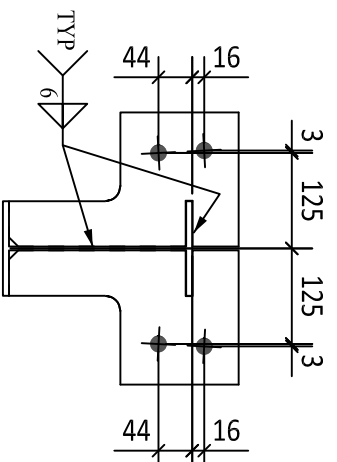
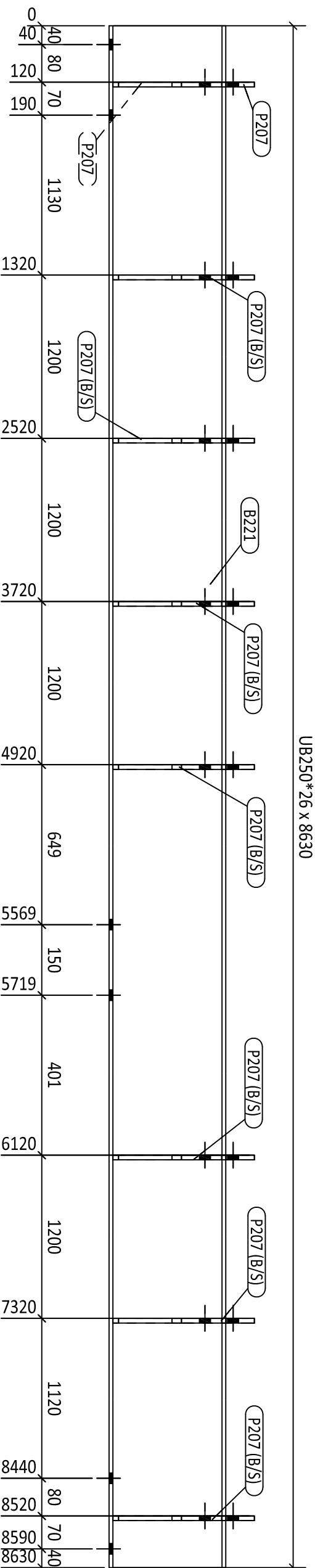


FABRICATION	CHECK QA	WELDER	FINAL QA
BY:	BY:	BY:	BY:
NAME:			
DATE:			
Welding	Wire Batch#:	Visual Inspect.:	WPS Used:



1 - REQUIRED AS DRAWN MARKED **BRB218**

ASSEMBLY MATERIAL LIST						
ITEM	QTY.	PROFILE	LENGTH	GRADE	WEIGHT(KG)	AREA(m ²)
B221	1	UB250*26	8630	300	221.53	8.28
P207	16	PLT10*176	301	300	66.43	1.30
TOTAL WEIGHT OF ONE ASSEMBLY					287.96	9.59

REV	DATE	DESCRIPTION	SIT
1	17-02-2020	ISSUED FOR CONSTRUCTION	SIT
0	06-02-2020	ISSUED FOR CONSTRUCTION	SIT
			DT

PROJECT:		No. REQ:	1
ASSEMBLY NAME:		DRAWING No:	BRB218
ASSEMBLY FINISH:			
CLIENT JOB NUMBER:			
MODELLED BY:			

1. ALL WELDS TO BE 6mm CONTINUOUS FIMAR & FULLY SEALED U.N.O
2. ALL BUTT WELDS SHALL BE FULL PENETRATION U.N.O
3. ALL WELDS SHALL COMPLY WITH AS 1554.1 IN CONJ. WITH NZS 3404 - D
4. ASSEMBLY MARK TO BE STAMPED ON TOP FACE WHERE INDICATED THUS THE FOLLOWING INDICATES HIDDEN FACE
5. ALL NOTCHES TO HAVE 1mm RADIUS AT INTERNAL CORNERS
6. NO PAINT IN WAY OF T-BOLT CONNECTIONS OR SITE WELDS
7. REFER TO THE MARKING PLANS FOR LOCATIONS OF PRECAMBERS
8. ALL GALVANISED ASSEMBLES TO HAVE DRAIN HOLES PROVIDED TYP.